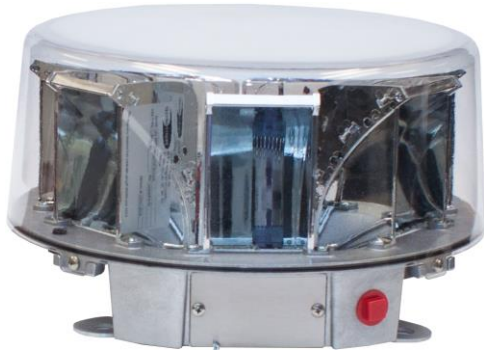


# LED Hybrid Beacon (White/Red) 24/48/-48 Vdc

(LED-B-Hybrid 48V)



## FEATURES

- Reduced energy consumption by 90% versus incandescent
- Optical design to reduce ground disturbance
- 10-year durability
- Very stable light output under voltage variations
- Standard 13 1/4" bolt circle
- Controller and power supply are located in a separate box, outside the light unit.

## SPECIFICATIONS

### Light output

Lamp type	LED
Light color	White and red
Effective intensity	20K day, 2K night cd; $\pm 25\%$ .
Horizontal coverage	360°
Vertical beam	3°
Expected min. lamp life	10 years +

### Electrical value

Beacon Power consumption	60 W day / 20 W night
Power requirements	24/48/-48 Vdc nominal ( $\pm 20V$ to $\pm 60V$ )

### Mechanical

Beacon weight	8 Kg (18 lbs)
Beacon dimensions (dia. x height)	48,1 cm x 35.5 cm (19" x 14")
Controller weight	11.3 Kg (25 lbs)
Controller dimensions (width x height x depth)	381mm x 444mm x 211mm (15" x 17.5" x 8.3")

### Others

FAA type	L-865 / L-864
Transport Canada type	CL-865 / CL-864
Configurable for Catenary	L-866-885 / CL-866-885
Operating temperature	-40°C to 55°C (-40°F to 131°F)
Warranty	5 years

## COMPLIANT WITH:

FAA AC 150/5345-43G

Standard 621 of :

-  Transports Canada / Transport Canada
- ICAO - Medium Type A & B

ETL CERTIFIED FOR FAA:  
AC 150/5345-43G