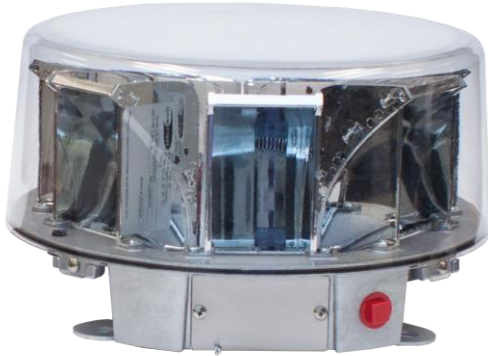


LED WHITE BEACON

(LED-B-WHITE)



FEATURES

- Reduced energy consumption by 90% versus incandescent
- Optical design to reduce ground disturbance
- 10-year durability
- Very stable light output under voltage variations
- Standard 13 1/4" bolt circle
- Controller and power supply are located in a separate box, outside the light unit.

SPECIFICATIONS

Light output

Lamp type	LED
Light color	White
Effective intensity	20K day, 2K night cd; ±25%.
Horizontal coverage	360°
Vertical beam	3°
Expected min. lamp life	10 years +

Electrical value

Power consumption	60 W day / 20 W night
Power requirements	120/240 Vac 50/60hz


Mechanical

Weight	8 Kg (18 lbs)
Dimensions (dia. x height)	48,1 cm x 35.5 cm (19" x 14")

Others

FAA type	L-865
Transport Canada type	CL-865
Operating temperature	-40°C to 55°C (-40°F to 131°F)
Warranty	5 years

COMPLIANT WITH:

-  Transports Canada Transport Canada Standard 621
- ICAO - Medium Type B & C
- Conformidad con las normas de Mexico

ETL CERTIFIED FOR FAA:

- AC 150/5345-43G